

C U S T O M - M A D E P R E F A B R I C A T E D S W I M M I N G P O O L S



MLine
MLine
MLine

RivieraPool®

PREFABRICATED SWIMMING POOLS • WHIRLPOOLS

Design, functionality and quality

People are increasingly looking for high-end, unique designs for their indoor and outdoor swimming pools. They desire straight and minimalist lines, well-balanced proportions and stylish colours and materials. Of course, all that has to be combined with maximum functionality for a swimming pool that offers far more than a "basin full of water".

Contemporary pool design requires clear-cut concepts meeting all your daily needs and wishes. It requires an individual usage

concept that is tailored to your visions: Do you prefer to swim long laps in peace, would you like to focus on fitness and workout, or get an all-round swimming pool for the whole family? We can develop your individual concept for fun and functionality with step systems that will be more than just a pool entry and exit point. It can also include massage seating, a shallow water lounge or a counter current system and jetted air beds are easily added. We offer an ambience package with special lighting

and sound equipment, an energy-saving concept taking into account all aspects from highly efficient insulation to solar covers. As well as this, a security package is included ranging from sure-footed step systems to slatted automatic covers.

A STYLISH COMBINATION OF ALL THESE ELEMENTS, TAILORED TO YOUR INDIVIDUAL WISHES AND NEEDS: THAT'S WHAT THE MLINE OFFERS.

MLine

The MLine pool (size: 5 m x 10 m) combined with our whirlpool Wave Highline, constructed with an infinity edge. Both pools are tiled with Ezarri mosaic. A double-sided panorama channel allows a great view of the surroundings.





Mosaic, ceramic tiles or natural stone ...

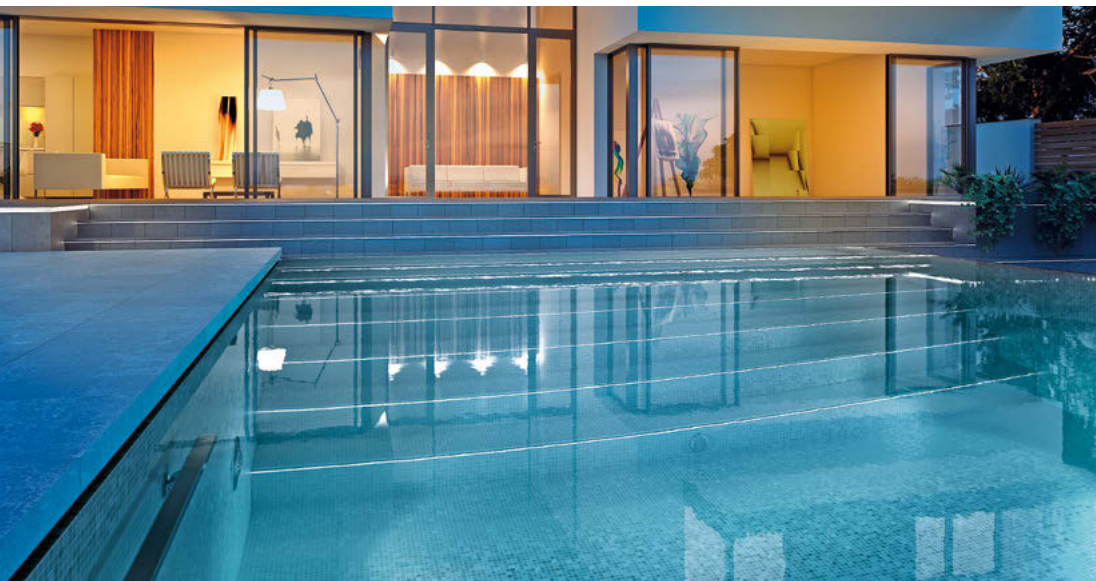
This is an example of a simple and yet very stylish built-in pool, centrally placed in front of the terrace. You have a clear, uninterrupted view from the living room through to the pool and garden. The MLine pool (size: 5 m x 10 m) has been fitted out with a ceramic tile with slate effect. The fine tiling pattern and light reflects on the walls and floors to create a natural appearance on an ultra-modern construction.

MLine swimming pools are formed from a shell made of multilayered epoxy acrylate

reinforced with fibreglass. The mosaic or stone tiling is laid on an epoxy resin before being grouted in place. The result is a homogeneous material structure that is no longer separable, therefore offering excellent elasticity. This allows the possibility to add mosaic tiles in the factory and then to transport the ready-made pool over long distances by lorry.

That's our concept of today's prefabricated swimming pools: smart and intelligent design offering everything a modern swim-

ming pool needs. Individually designed to your wishes and completely manufactured in our factory owing to state-of-the-art technology.



The MLine pool (size: 5 m x 10 m). The "Palace" step system with its simple, modern design is built across the full width. The panorama channel offers a complete view of the surroundings. The natural stone surround extends 3 cm above the water level into the pool.





Perfect poolside living: the MLine

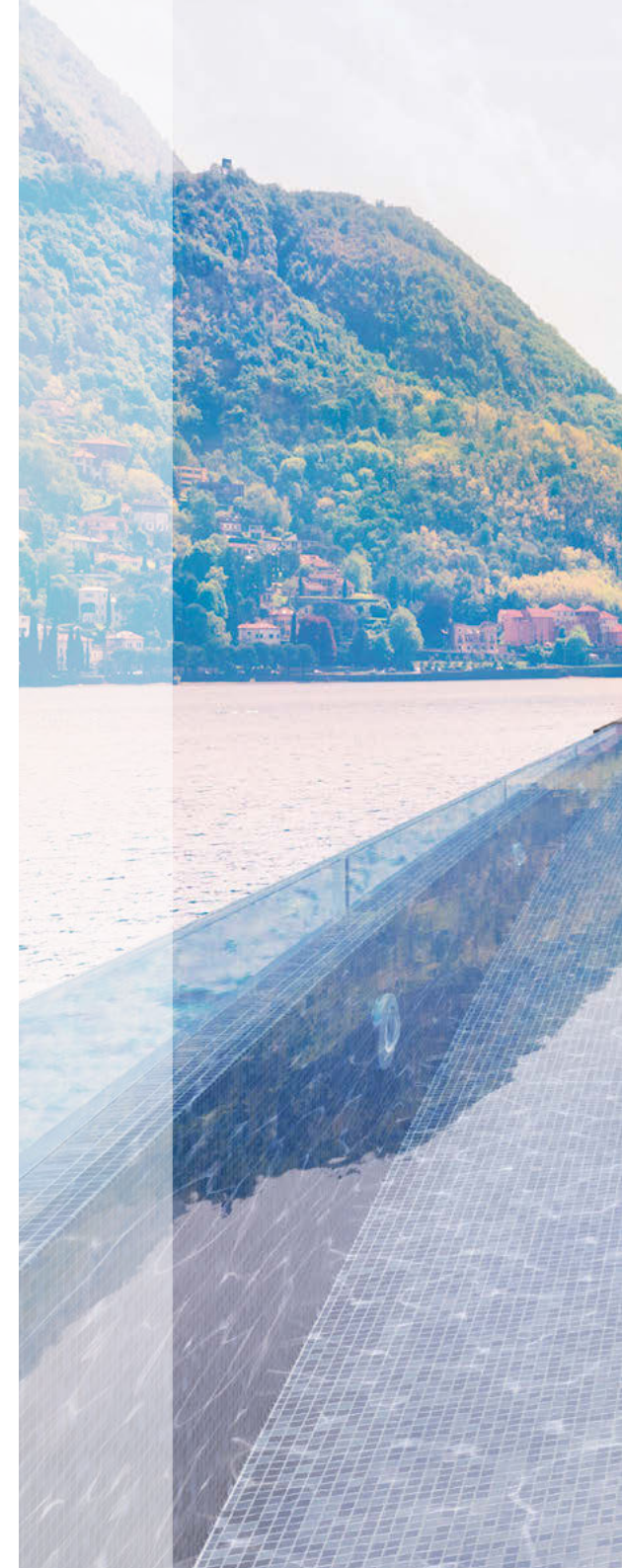
Would you like your terrace gently floating above the water surface? Then choose a skimmer pool with a high water level. Or do you want the water surface to reflect the terrace like a mirror, seamlessly flowing? Then an overflow "infinity" pool with a concealed channel is the right choice for you. Or should the water surface follow the contours of its surroundings as a terraced flow, offering a stunning view of the valley? Then opt for a panorama channel.

And if you want water flowing through your garden, a spring with water bubbling up and gently running down a stream into the pool would be your perfect choice. The MLine pool offers the right solution in all of these cases. The best bit is: the prefabricated system will be transported to your location in one piece and is installed in just a matter of days.

MLine – YOUR ARCHITECT
WILL LOVE IT!



*The MLine pool (size: 4 m x 12 m).
The step system "Comfort" is installed
in one corner, leaving clear space in front
of the counter current unit.
The rectangular handrail securely leads
you into the water.*





Centre of your garden: swimming pool and whirlpool

A classic system like this will inspire many generations. Straight-line architecture with the "Palace" step system built in across the full width at one end of the pool and the roller shutter niche at the opposite end creating a timelessly modern look. Add to this a chic mosaic surface from the high-class Ezarri line impressively reflects the light of the underwater spotlights. A classic that doesn't need further description but speaks for itself. The perfect addition for

your all-round wellness package: our new whirlpool "Strato 2.0" whose straight and modern design is perfectly tailored to the MLine. A compact whirlpool equipped with high-end technology protected by weatherproof covering. Especially in winter, this whirlpool will be a luxury highlight in your pool garden. There is nothing better than relaxing outside in a hot tub surrounded by a winter's snowscape before jumping into refreshing pool water.



The MLine pool (size: 5 m x 12 m). The "Palace" step system is built in across the whole width of the pool. The whirlpool "Strato 2.3 portable" offers a relaxing whirl bath experience.



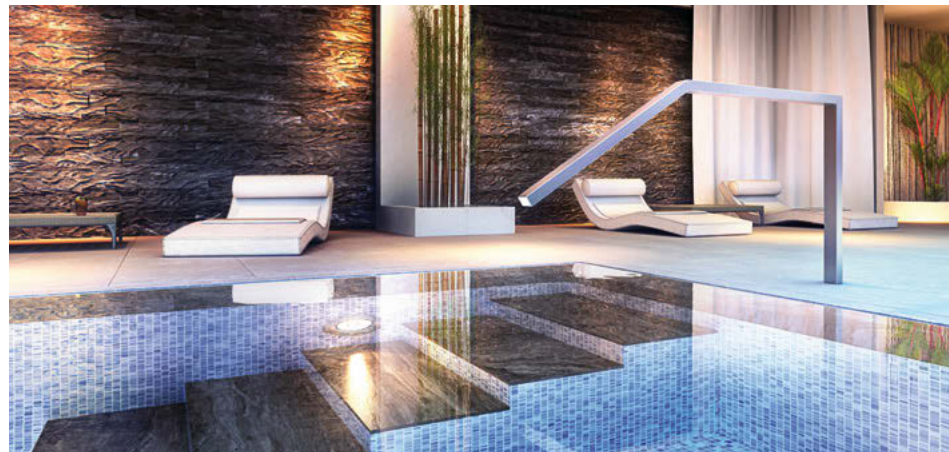


Living space par excellence – Your indoor pool

Seamlessly embedded with the ground, the water's surface acts like a perfect mirror of its surroundings. The spectacular reflection of the warm lighting and the fireplace creates a cosy, relaxing atmosphere. Whether you want to take a swim through the smooth water's surface or enjoy a hot whirl bath in front of the fireplace – the MLine pool turns your indoor swimming area into a perfect haven of well-being. Particularly for indoor use, the MLine offers a lot of technical benefits. The Thermosafe slatted

cover keeps heat and moisture inside the pool so that your indoor climate remains pleasantly dry. In addition to this, the overflow channel is extremely low noise. The design of the channel cover allows your flooring to be placed up onto the pool walls, extending into the water. The construction below the pool enables external access to all technical equipment, thus making a concrete backfill redundant. A solid and reliable system!

The round whirlpool "Roman 225" in front of the fireplace, with acryl glass surface. By request, the whirlpool can be tiled with the same mosaic as the swimming pool.



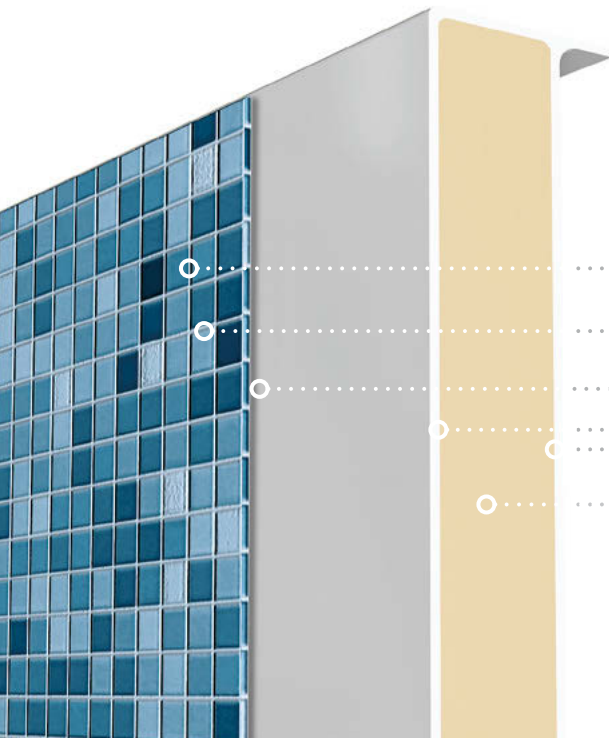


Construction

1 Homogeneous wall construction

The basis of the MLine structure is a 60 mm thick insulated core which has an extremely low thermal transmittance and can be tailored to every desired size. The core is then coated with several layers of epoxy acrylate reinforced with fibreglass. This composite material provides a high chemical resistance, extreme stability and at the same time high elasticity. For this reason, this same combination of materi-

als is used to manufacture wind turbines, aeroplanes and yachts. The mosaic is then glued to the surface with an epoxy adhesive and grouted. The result is a homogeneous material structure that is no longer separable, but still flexible enough to bear up against movements during transport or external temperature differences.



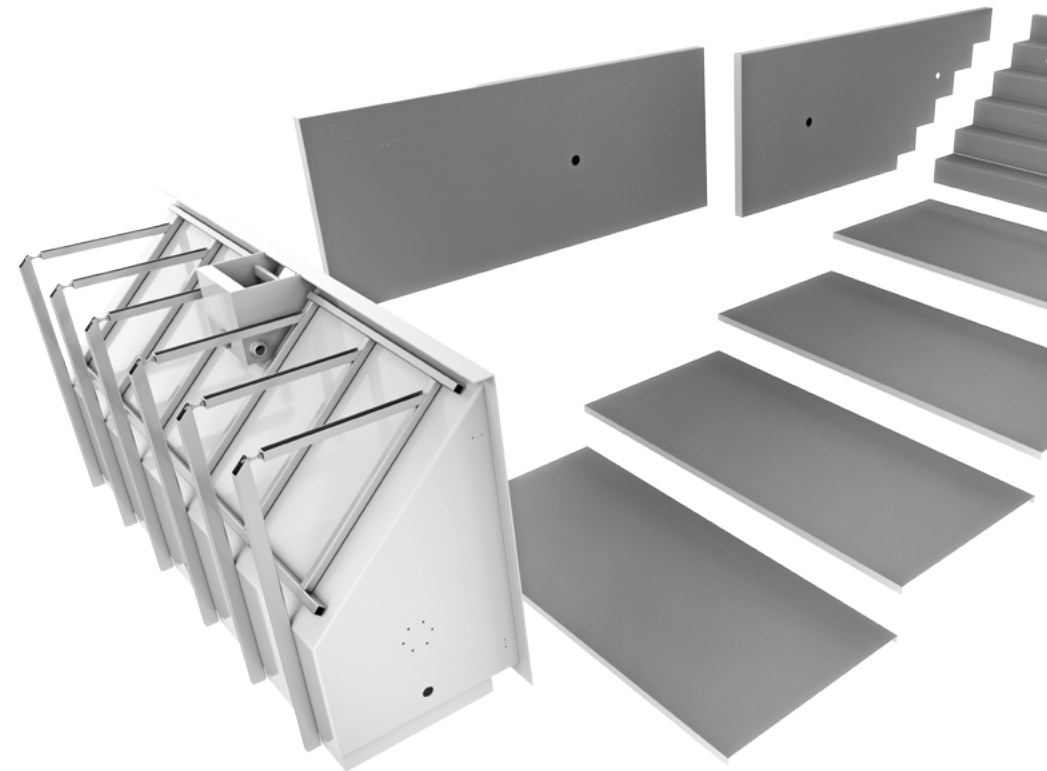
- Mosaic, tiling or porcelain stoneware
- Epoxy joint
- Epoxy resin
- Epoxy wall
- Polyurethane foam insulated core

2 Shell elements

The individual manufacturing of the MLine pool is achieved by fabricating panels which are then used to assemble the pool shell. These panels are fabricated separately custom-made in the required sizes. Moulded parts are available for functional elements such as steps, roller shutter niche and overflow channels.

3 One-piece shell without mosaic

Each element will be individually tailored for your pool, assembled in to a pool shell, then reinforced with fibreglass again. Making the joints between the panels permanently and homogeneously sealed.



4 Applying the mosaic

The pool surface is then covered with mosaic or porcelain tiles. Built-in components are installed in a way that allows them to smoothly blend into the grouting pattern of the pool surface.

Planning advantages

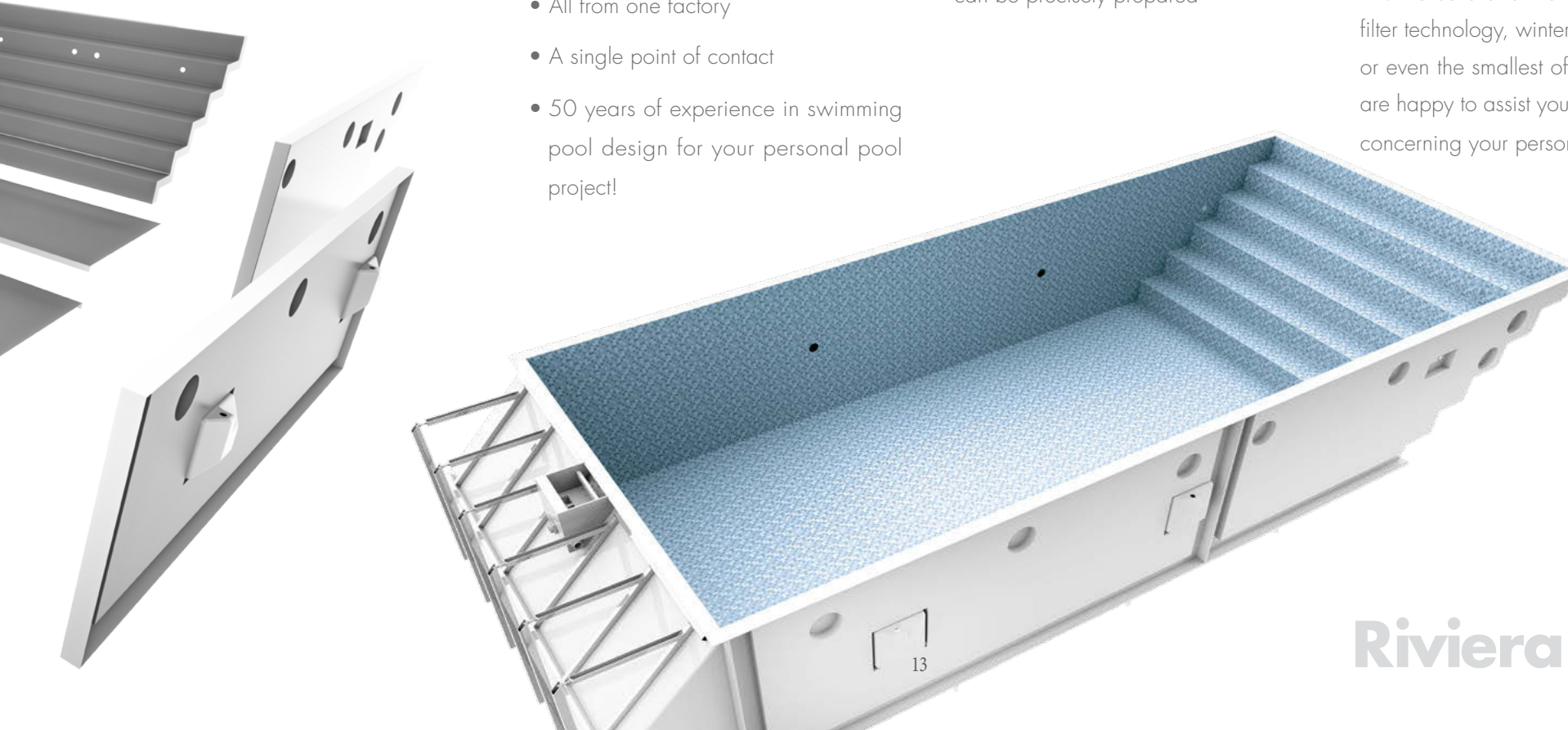
- Strictly angular elements are ideal for modern mosaic designs
- A wide range of prefabricated elements for modular planning and design
- Any element not listed in our catalogue can be custom-made for you
- Clear-cut interfaces and boundaries
- All from one factory
- A single point of contact
- 50 years of experience in swimming pool design for your personal pool project!

Manufacturing advantages

- The swimming pools are completely prefabricated in our factory
- Pools up to a size of 5 m x 10 m can be delivered in one piece
- Extremely quick manufacturing time
- Related trades such as the trench excavation, filtration technology, etc. can be precisely prepared

Our promise to you:

- We know every single piece that has been installed in your pool inside and out. Therefore, we can assure you that visual appearance as well as functionality of your MLine pool will last for many, many years
- Our pro-partners guarantee a professional and impeccable on-site service. Whether it is the care and maintenance of the filter technology, winterising your pool, or even the smallest of questions: they are happy to assist you with everything concerning your personal pool project



The construction



The pool is prefabricated in our factory, not on site. It is delivered to your location with a special transporter, either upright or on its base.

The pool arrives fully tiled at your location



QUICKLY ASSEMBLED

The pool will be delivered to your location with a special transporter and if possible, will be directly placed into the excavation with the lorry's crane. Otherwise, the assembly is quickly done with a full size crane or, if necessary by helicopter. The pool is set on the prepared foundation raft and backfilled with lean-mixed concrete as the water level rises.

For indoor pools, a self-supporting structure will simply be placed on the existing foundation raft.

The installation of the pool equipment and technology takes place at the same time. Your RivieraPool will be ready for your first swim in just a few days!

ECONOMICAL & SAFE

Your RivieraPool is very economical. The insulated core in the walls and floor (sandwich construction with PU foam core "Thermoblock") keeps the heat inside the pool. Very few other conventional pool constructions can offer such well-insulated wall thickness. The solar cover not only insulates the water surface, they also transfer additional heat to the pool. Furthermore, the cover enhances the safety aspect of your pool. An optional integrated safety ledge prevents the covers from sinking when under load, ensuring that your pool is securely closed.

ROBUST & DURABLE

RivieraPools are made from high-quality epoxy acrylate using fibre composite manufacturing techniques, just like wind turbines or aircrafts. The extreme stability of fibreglass combined with the chemical resistance of epoxy acrylate guarantee excellent weather resistance and temperature adaptability, ensuring a long service life. Moreover, the ceramic compound layer creates a homogeneous and durable structure. The integrated steel framework provides additional stability. RivieraPool ensures long term resistance against fading

and osmosis. Our pools are provided with a 20 year structural warranty, a 10 year delamination and blistering warranty, a 5 year warranty on built-in components and pipework and a 2 year warranty on electrical components such as pumps, motors and heaters.



20 year structural warranty.



WE KEEP OUR PROMISE

Warranty Certificate
- for privately used swimming pools only -

RivieraPool Fertigschwimmbad GmbH, Klöcknerstraße 2, 49744 Geeste, Germany, guarantees to the direct buyer of the swimming pool, valid within the European Union only, as follows:

- 20 years on water tightness of the fibreglass pool shell
- 10 years on non-blistering and non-delamination of the pool shell
- 5 years on defects on built-in components and pipes
- 2 years on defects on electrical components like pumps, motors and heaters

We do not guarantee on: lamps and glasses, fuses, neck cushions, filter cartridges etc.

AK
INDUSTRIEVEREINIGUNG
VERSTÄRKT KUNSTSTOFFE

Aktives Mitglied in der
Arbeitsgemeinschaft
Verstärkte Kunststoffe -
Technische Vereinigung
e.V. (AVK-TV)

Active member of the AVK-TV
(Federation of Reinforced Plastics)

www.pools.de

Order No. (Kommission):
Model:
Dealer:
Delivery date:
Customer:

Quality management Production manager General manager

RivieraPool®

Klöcknerstraße 2 • D-49744 Geeste • ☎ +49 5937 660 • Fax: +49 5937 85 41 • e-mail: info@pools.de

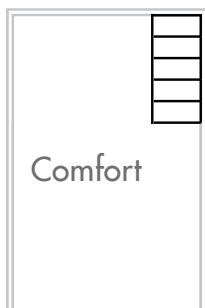
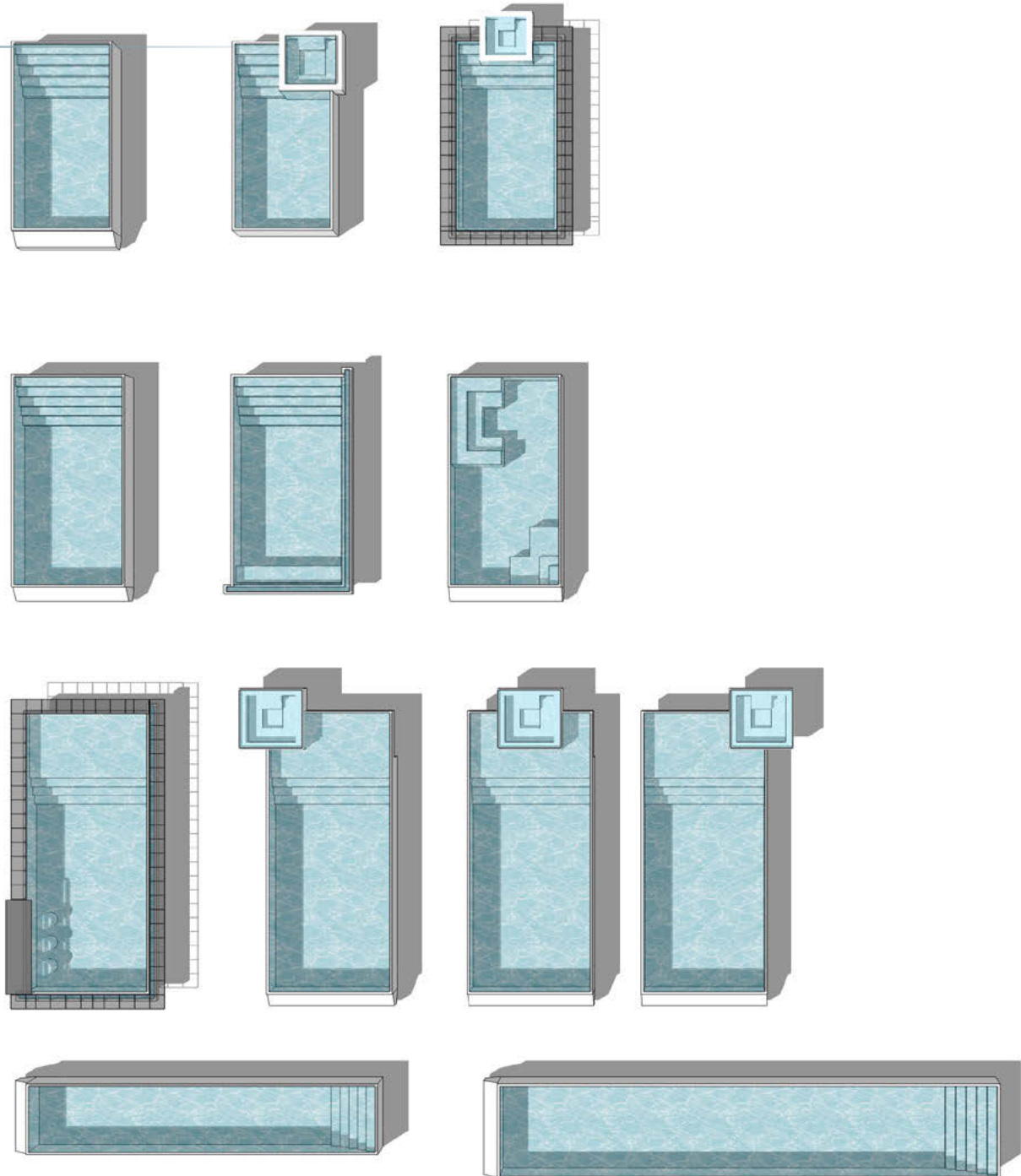
Applies across the European Union to every private first-time buyer of a RivieraPool prefabricated swimming pool

System options

WHAT MLINE OFFERS ...

Mline offers a variety of options to create a unique pool design and at the same time benefit from the advantages of a prefabricated kit. Choose your step system, roller shutter technology, pool shape and size and skimmer or overflow system. Personalise your pool with our preferred mosaic, lighting and technical equipment.

All of these details will be defined in an on-site planning meeting. Your pool will be manufactured and fully equipped at the factory. It will be delivered in one piece and be ready to use in just a few days.



Comfort



Palace



SKIMMER

If you want your terrace to float above the water surface, a skimmer pool with a high water level is the right choice. The coping stones extend over the pool walls by about 5 cm, the water level is approximately 6 cm below. This creates a subtle shadow gap which is perfectly suited for the installation of indirect lighting. In addition, the design automatically brings about a gutter that can effectively absorb waves and prevent them from bouncing back. Furthermore, it supports the slatted pool cover to securely and precisely slide in between the pool walls.



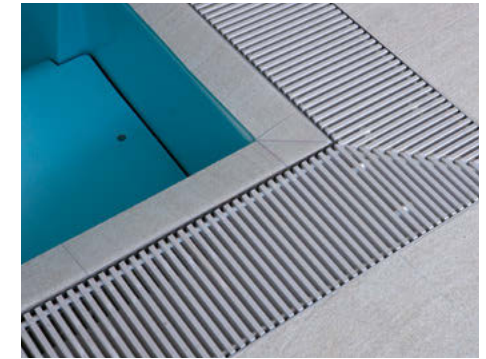
CONCEALED OVERFLOW CHANNEL

Would you like the water surface to be embedded into its surroundings like a mirror? Then we recommend the MLine pool with concealed overflow channel, where the water runs over the top edge of the pool into the channel. The design of the channel allows the terrace tiles to extend over the edge of the pool and onto the pool walls, so that the tiling looks to be continued under the water. The capstone has two openings for water intake and can easily be removed for cleaning purposes.



PANORAMA CHANNEL

The panorama channel, also called "vanishing edge" creates the stunning effect of letting the water surface disappear into the horizon. No channel or surfaces interrupt your view of the surrounding landscape. Panorama channels are often used on slopes or hillsides to enable breathtaking views of the valley below. They are also a great choice for terraced pools perfectly highlighting the different levels. Using a panorama channel on each side of the pool even intensifies the effect. The other sides of the pool walls are usually skimmer walls with a high water level and overhanging coping stones.



OVERFLOW CHANNEL WITH GRATING

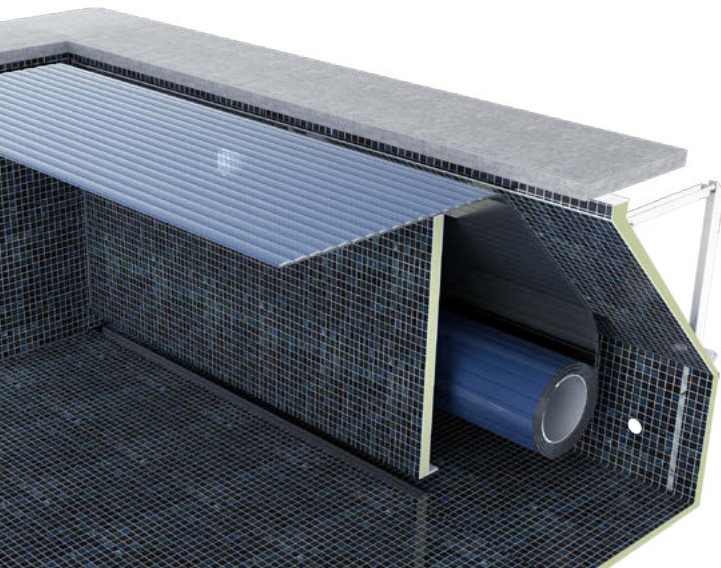
You can also add a covering grate to your overflow channel, an option that is compulsory for commercial pools. This grate is extremely splashproof and can easily be removed for cleaning purposes.

Roller shutter solutions

Roller shutter niche

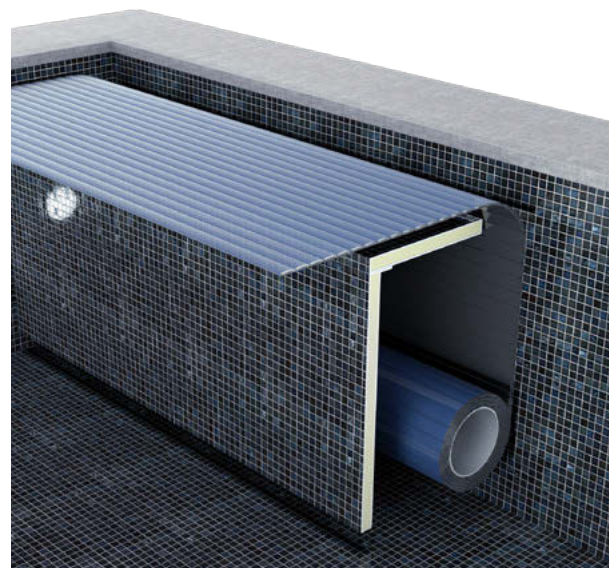
The roller shutter is installed below the coping stones and behind the pool walls.

- A subtle and unobtrusive solution
- The closed, straight front edge of the pool is perfect for counter current swimming
- The roller shutter moves out of a narrow slot below the water level. A step on the niche floor facilitates pool cleaning
- The counter current return suction can be perfectly "hidden" in the niche creating a well balanced and calm visual appearance.



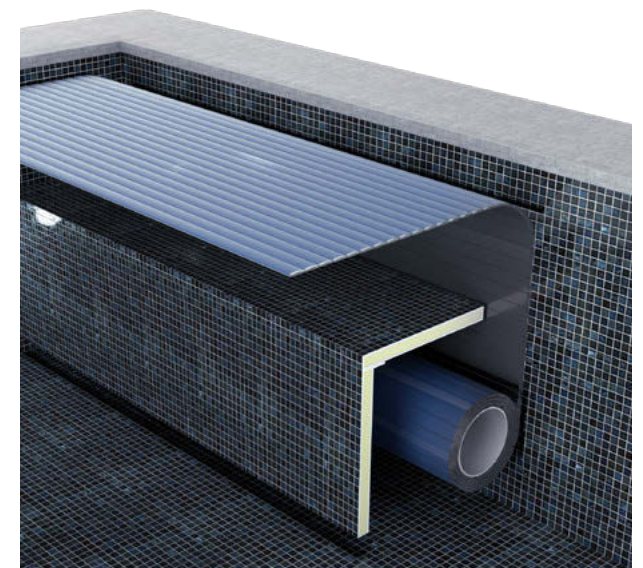
Shallow water bench

The roller shutter is built in below a seating bench, installed at about 23 cm below the water surface. This design enables comfortable sitting or lying in your pool's shallow water zone. In addition, the straight and closed wall below the bench is perfect for counter current swimming. The roller shutter is mounted above the pool floor to provide maximum water buoyancy and secure use. The seating bench is detachable which enables easy access to the roller shutter system.



Massage bench

The roller shutter is mounted below a seating bench installed 60 cm below the water surface. This design allows comfortable sitting in deep water. Massage jets can be placed at different heights within the rear wall. The seating bench is detachable which enables easy access to the roller shutter system.



for perfect safety and energy efficiency

Safety and energy efficiency

Our slat profiles are available in two different types and grades, either made of PVC in colours solar and white, or made of extremely durable polycarbonate in colours solar and silver. The RivieraPool "Thermosafe" roller shutter covers are LNE tested and certified. They comply with the NF P90-308, the only European security regulation for pool covers. Our polycarbonate profiles are hailproof and included in the Swiss hail protection register. Roller

shutters protect against coarse dirt and evaporation and provide free solar heating. Furthermore, the covers essentially add to your pool's safety. When not in use, the pool can be securely covered and locked via key switch.

Heating with the sun

Energy-saving, environmentally sound, highly efficient. Did you know that about 80% of the heat energy is lost from the water surface?

This is caused by

- evaporation
- convection
- emission

The heat loss can be almost completely prevented by the installation of a pool cover. Beyond that, solar slats collect and

transfer heat from the sun directly into your pool while it is covered. The water heats up and the slats prevent the heat from escaping. Global radiation data confirms that an average of 160 kW per square metre per month hits the pool surface from May to August. During this period, 100 kW/h per day can be transferred to a covered outdoor swimming pool sized 4 m x 8 m.



Mosaic surfaces

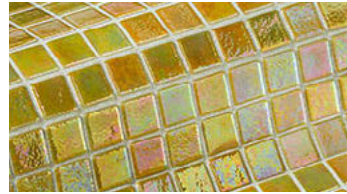


MOSAIC

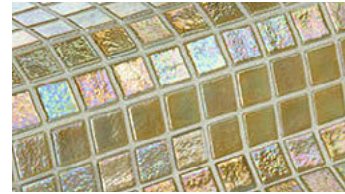
Mosaic, or more precisely, glass mosaic is one of the most durable, high-end surfaces available for swimming pool design. The single mosaic tiles have different tones and thus produce a unique reflection of light and colour to your pool, depending on the angle you're looking from and the spectral colour hitting the water surface. This results in an infinite number of different colour effects which extensively contribute to the ambience and atmosphere of your indoor or outdoor pool area.



We recommend the Ezarri mosaic collection, one of the most renowned European manufacturers of glass mosaic tiles. The high-quality material offers numerous design options and is easy to handle. You will be thrilled. Of course, other mosaics are also available on request, provided that they fulfil our technical standards.



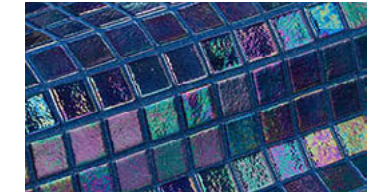
AMBAR



ARENA



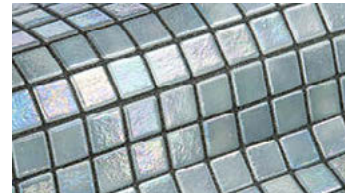
AZUR



ZAFIRO



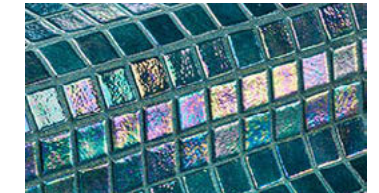
CORAL



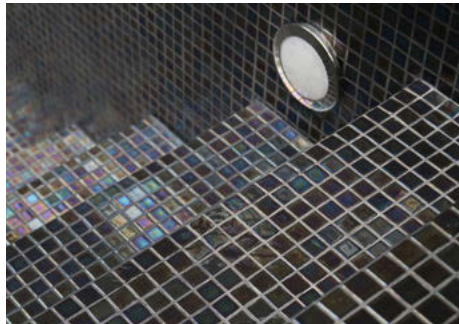
CUARZO



EBANO



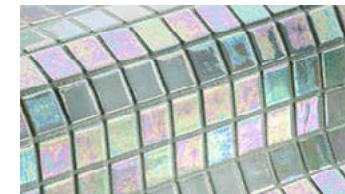
JADE



COBRE



NACAR



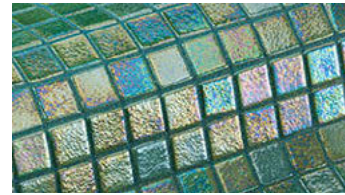
PERLA



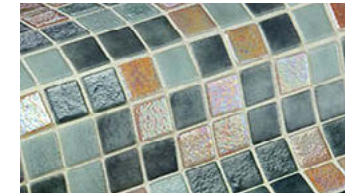
MARFIL



DIAMOND



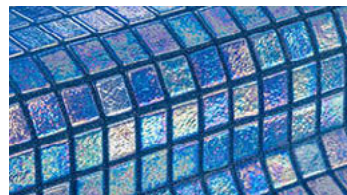
GREEN PERAL



MOON



OASIS



OCEAN



SAHARA



SKY



STONE

The equipment



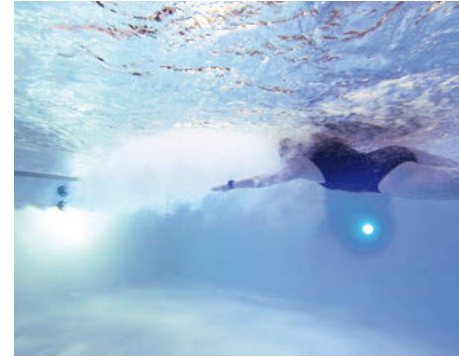
COUNTER CURRENT SYSTEMS

Swimming on the spot in a never ending stream of water: that's what a counter current system offers.

The water gets pushed across the pool through jets by high powered pumps and is then drawn in on the opposite side. The result is a strong and smooth current against which you can swim and exercise for as long as you want. Depending on the swimmer's distance to the jets, the current gets more gentle or more challenging.

For recreational swimmers who enjoy calm and continuous movements in the water, we recommend the counter current unit "Twinjet 800" (2,2 kW and 48 m³/h).

For fitness-oriented swimmers the "Twinjet 1000" (2,6 kW and 60 m³/h) is the right choice.



The Q4 produces 2 x 2,6 kW distributed to a lower and an upper pair of jets. The lower jets enable calm and continuous breaststroke swimming. Switching on both pairs of jets at the same time results in a strong current with a flow rate of 120 m³/h which turns your pool into the perfect fitness area.

You can turn the counter current unit on and off via lit piezo switches installed on the pool wall. Each counter current system comes with an air regulator that enables and controls the air-intake from outside.



MASSAGE JETS

Our "Healthstream" hydromassage jets enable a powerful and targeted body massage. Four massage jets, placed at different heights within the pool walls, provide a targeted massage of feet, calves, thighs and the lower back. Air-intake from outside is possible through intake sockets hidden inside the roller shutter shaft.



AIR-BUBBLE PLATE

Air-bubble plates are installed in your pool's floor. About 200 m³ of air per hour gets pushed from pool floor to water surface by an air-blower. The result is a wide and powerful water stream.



LIGHTING

When it comes to atmosphere and ambience, the pool's lighting is the centrepiece of your indoor or outdoor swimming area. Warm and soft light does not only have an inviting and calming effect, it also reflects every move of the water to the pool's surrounding, for example onto a wall or below a tree. Well-thought-out lighting can turn your swimming area into an atmospheric lagoon. Use lighting to highlight individual parts of your pool. Lit steps create interesting light and shadow effects, lit inlet nozzles accentuate the balanced water flow, just like a stream. You may also use



indirect lighting from a roller shutter niche or from below a coping stone. And how about adding some colour? Our product range includes warm-white LED lighting as well as coloured lighting creating different colour temperatures and play of light. The desired programme can be switched on via remote control.



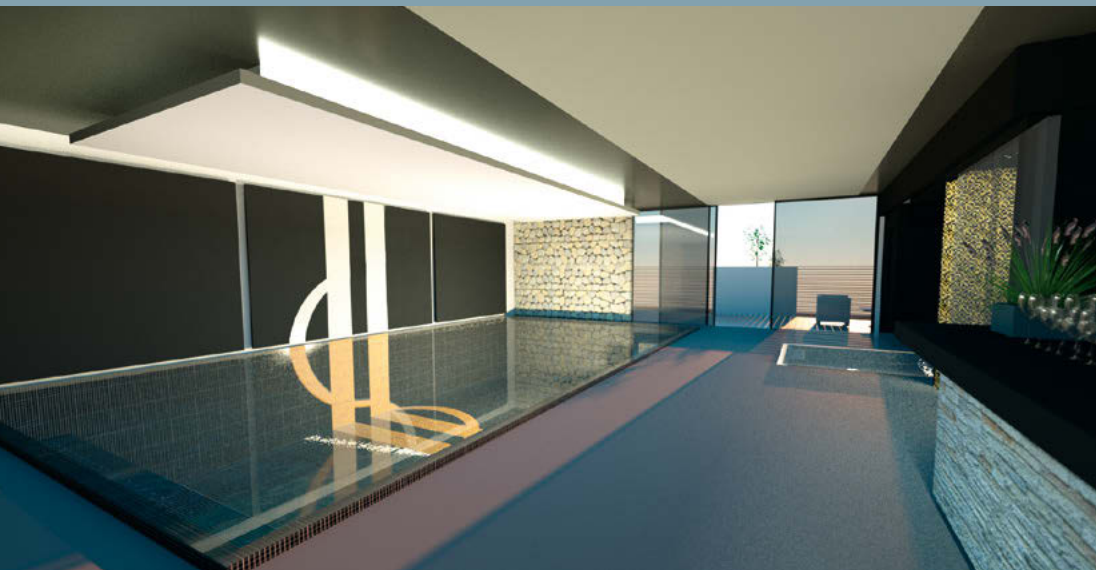
HANDRAILS

Fitted handrails are available for every step system. They do not only ensure a safe entry and exit but also highlight the entry area in an unobtrusive and elegant way. Additionally, grabrails can be installed anywhere in the pool, either as safety rails for the roller shutters or in front of a massage unit. For swimmers who frequently do aqua fitness and aerobics, we offer a set of handrails that can be integrated and custom-fit for every exercise (shoulders and neck, feet and knees, hip and backbone).

Planning your wellness area

Whether you have a rough freehand sketch or a complete detailed plan; we develop an in-depth and precise drawing of your swimming pool including all elements and features. This drawing can be used for costing, determining the circuit points and in-depth designing. We will provide your architect with the drawings in the desired CAD file format. Thus, all details and features can be easily mounted and visualised. In case you prefer to “brainstorm” first, we are always happy to help with design input

and ideas. All we need is a floor plan of the swimming pool and your desired attractions such as sauna, whirlpool, lounge, etc. We then develop a rough concept for you which you can present to your architect. We also offer the option to visualise your swimming pool for you, illustrating many details well beforehand.





Professional planning from beginning to end ...



"I will plan your new water garden on the basis of a floor plan. Thanks to computer modelling, we are able to generate different angles of view. Therefore, maximum safety of design is given. Implementation will take place with the help of your local GaLa company, guaranteeing a smooth process and perfect service at a fair and reasonable price."



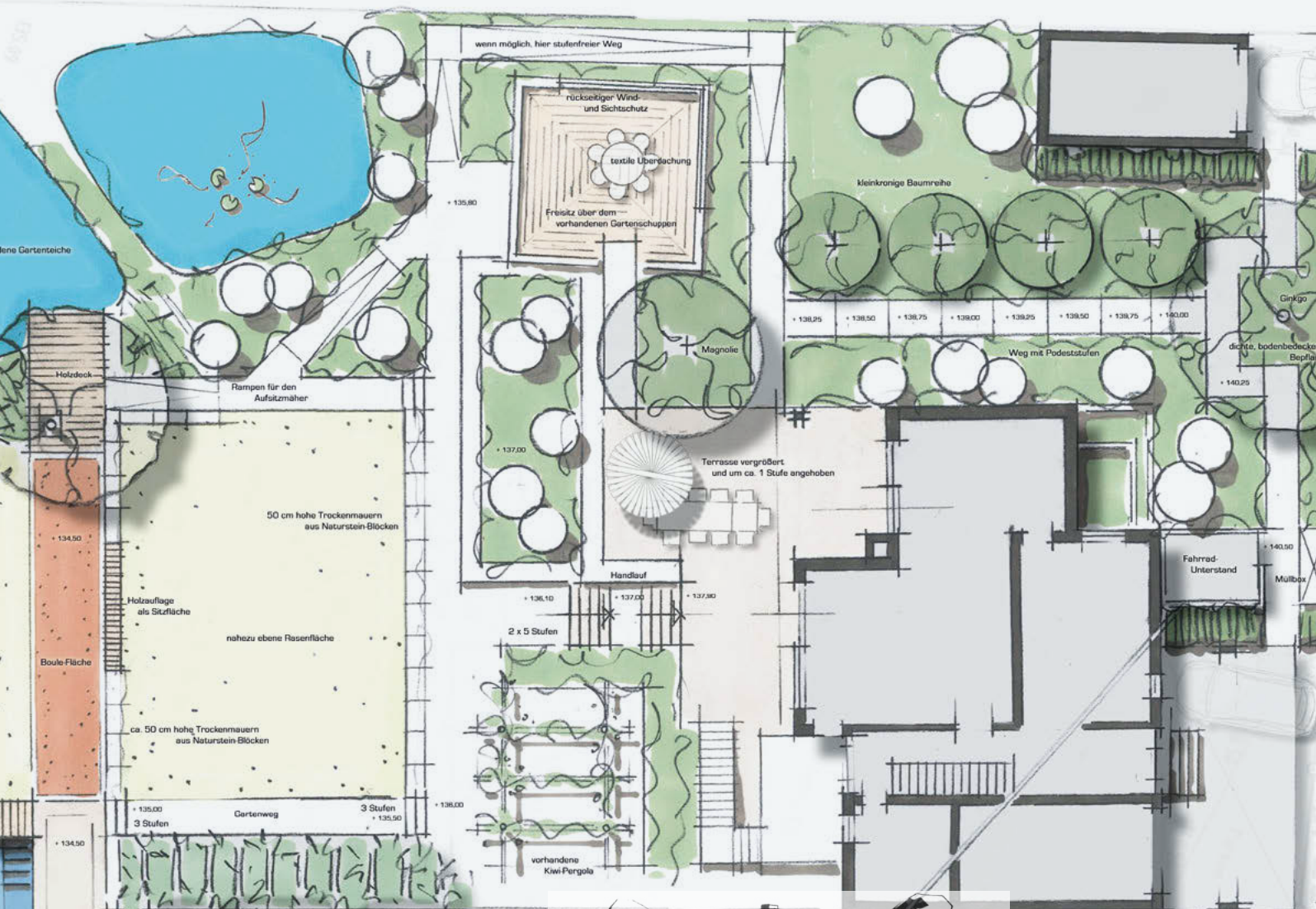
JENSEN LANDSCHAFTSARCHITEKTEN

Walderseestraße 61 · 22605 Hamburg
Tel.: +49 (0) 40 - 82 49 29 · E-Mail: garten@hamburg.de
www.jensen-landschaftsarchitekten.de

This garden has been planned and implemented from beginning to end by Sebastian Jensen. The pictures speak for themselves, the customers are thrilled.

Perspektive






JENSEN LANDSCHAFTSARCHITEKTEN
 WALDERSEESTRASSE 61 - 22605 HAMBURG
 +49 (0)40 82 49 29 / E-MAIL: GARTEN@HAMBURG.DE



Start realising your swimming pool dream with professional planning and design every detail that will be important to you later with the help of experts.

Be inspired:
www.jensen-landschaftsarchitekten.de

Visit your dreams...



www.rivierapool.com

RivieraPool®

One of the leading
German manufacturers
of prefabricated swimming
pools, pool equipment
and whirlpools.

Member in the BSW.



RivieraPool Fertigschwimmbad GmbH • Klöcknerstraße 2 • D-49744 Geeste • Tel. +49 5937 660 • E-Mail: info@pools.de

Date: 10.2015